



Spiral-Cut™ Cable wrap cutting system

With integral Accra-Feed™ UA belt infeder

The Spiral-Cut™ is designed to cut a right or left handed spiral along the length of flexible and semi-rigid plastic tubing. Diameters from 3 to 60 mm can be handled. Most common materials can be cut, including polythene (PE) and Nylon® (PA).

The main benefits to the user are:

- Lenze i700 multi-axis AC servo control for optimum speed & accuracy.
- A faster blade speed for a larger spiral pitch range.
- Full colour 178 mm (7") touch-screen panel with easy-to-use screens.
- Twin direct drive servo motors powering the puller belts via planetary gearboxes.
- Slide-away cutter head makes in-line start-up much easier.
- Very compact design; ideal for when space is at a premium.



Spiral-Cut™ Cutting system with Accra-Feed™ caterpillar infeder

The Spiral-Cut™ rotates a specially designed knife blade at high speed. The tube to be cut passes through the centre of the cutting head (see picture above). As it passes through the head, the blade cuts a spiral along the length of the tube. The pitch of the spiral is determined by adjusting the cutter rotation speed relative to the extrusion linespeed.

Both right-hand and left-hand cuts can be achieved with the machine. A selector switch is provided to choose the required handing.

The Spiral-Cut™ comes with an integral caterpillar infeder. If required a Servo-Torq® length cutter and coiling head can be added to the machine.

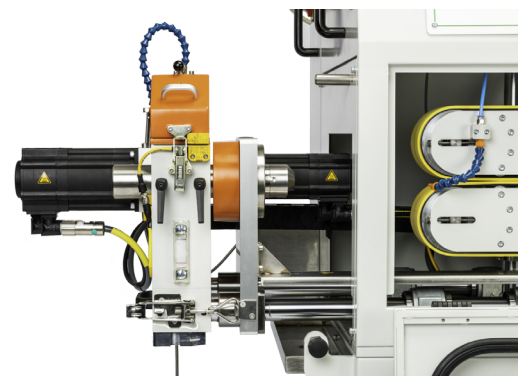
Important note: due to the nature of the cutting a second separate caterpillar is required when working in-line after an extruder.



Spiral-Cut™ cable wrap cutting system:				
Model number:	Max. OD cutting capacity (mm):	Cutter motor (Nm):	Belt size (mm)	Max. speed (RPM)
SC/30B-UA75	30	3.6	75 x 550	2000
SC/60B-UA95	60	7.1	95 x 600	2000

* Figures quoted refer to maximum revs/min of the spiral cutting head.

Servo-Torq® integral length cutting head:			
Model number:	Max. OD cutting capacity (mm):	Cutter motor (Nm):	Max. speed (RPM)
Servo-Torq® length cutter - 30 mm OD	30	7.5	2000
Servo-Torq® length cutter - 60 mm OD	60	11.0	2000



www.gillardcutting.com

For more information on our product range.

© 2020 Peter Gillard & Co. Limited
 Servo-Torq® is a registered trademark of Peter Gillard & Co. Limited
 Spiral-Cut™ is a trademark of Peter Gillard & Co. Limited



Spiral-Cut™ Cable wrap cutting system

With integral Accra-Feed™ UA belt infeeder



Mechanical specification¹:	<ul style="list-style-type: none"> 1000 mm + 50 mm (1000 mm - 1050 mm) line height. Alternatives available. Right-to-left product feed. Left-to-right available. Steel guides to ensure uninterrupted feed. Light-weight aluminium blade holder fitted with a blade for quick tooling change-over. Slide-away cutter head for easy line start-up. Poly-vee caterpillar belts covered in heavy-duty cellular Polyethylene (PU). Alternatives available. Single hand-wheel adjustment of both caterpillar belts around the machine centre-line. Robust fabricated steel base fitted with 75 mm diameter white plastic swivel castors.
Blade & caterpillar infeeder AC servo motor/ drive technology¹:	<ul style="list-style-type: none"> Lenze brushless AC servo motors with integral high resolution encoder feedback control. Lenze i700 multi-axis servo drive control. Very high torque even at high speeds. Low inertia/fast acceleration for dynamic performance. Rugged construction with encoders decoupled from the motor shaft. IP65 protected motor casings. Temperature sensors fitted into motor windings for protection against over-heating.
Cutting speed & modes¹:	<ul style="list-style-type: none"> Adjustable blade speed up to 2,000 RPM. Adjustment of spiral pitch from touch screen.
Operator control panel¹:	<ul style="list-style-type: none"> Siemens TP700 Comfort 178 mm (7") touch-screen. Robust IP65 protected front panel. Widescreen TFT with 16 million colours. Backlit LED screen - size 800 x 400 pixels. Front panel size 214 mm x 158 mm. 12 MB user memory SD card slot for program back-ups & updates. ProfiNET (Ethernet) & USB communications. Safety guards okay lamps with re-set soft button.
Software, PLC & motion control¹:	<ul style="list-style-type: none"> Siemens WinCC Comfort operating software. Siemens S-7 PLC with digital & analog modules. Lenze motion controller with EtherCAT comms.
Safety guarding¹:	<ul style="list-style-type: none"> PILZ Class 3 coded magnet safety sensors fitted to cutter lid, outlet cutter guide bush, slide-away cutter heads & caterpillar access door. All IP65 protected. Pre-belt inlet safety tunnel guard (RAL 2004 orange). Internal safety relay with re-set push button. Two emergency stop push buttons. Compliance with EN & ISO Standards. Fitted with a CE plate and provided with a Certificate of Conformity or Certificate of Incorporation².
Tooling & blades:	<ul style="list-style-type: none"> One pair stainless steel cutter guide bushes. 2 off blades supplied with the machine.
Available options:	<ul style="list-style-type: none"> Remote machine support via the internet. eWON industrial VPN router with Ethernet switch. Secure connectivity for remote back-up & support. Digital counter showing distance between the belts. Stainless steel drip tray under the belts. Traffic light beacon to indicate machine status. Servo-Torq® length cutter.

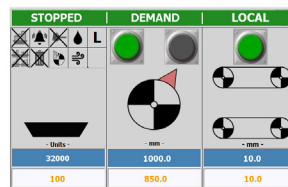
1. Specifications subject to change without notice. Please consult the factory for details of any changes.
2. Which Certificate will depend upon the exact configuration of the machine and the way it is installed.

Physical specification¹:	<ul style="list-style-type: none"> Approximately 1000 mm long x 1000 mm deep x 1750 mm high (based on 1000 mm line height). Approximately 450 Kgs without options fitted.
Power:	<ul style="list-style-type: none"> 400V three phase 50 Hz supply with neutral and earth. 30 Amp supply. Alternatives available.
Support:	<ul style="list-style-type: none"> One year parts warranty with express delivery during warranty period. Consumables excluded.
Touch-screen control interface:	



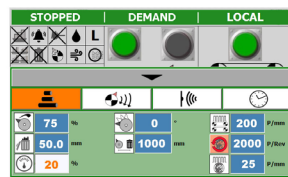
The Start-up Screen:

- The touch-screen panel controls all normal machine operations



The Control Screen:

- Enter the spiral pitch, linespeed & batch quantity. If length cutter is included, lengths from 10.0 to 999,999.9 mm can be entered.



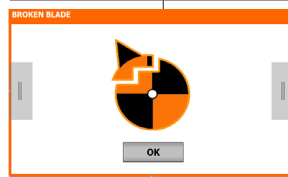
The Setup Screen:

- Blade speed adjustment from 50% to 100% of full speed.
- Stepless cutting from 1 - 2,500 cuts.
- Caterpillar local/remote speed selection.



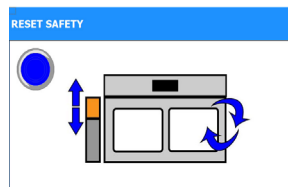
The Tools Screen :

- Set the control panel language
- Adjust machine parameters.
- Enter the password protected area.



The Options Screens:

- Individual options can have their own screen, such as the broken blade option. A warning screen appears when a broken blade is detected.



The Safety Screens:

- Easy-to-follow screens inform the operator on the machine status, with visual instructions on what to do.

Many options are available. Please contact us for more details.

Gillard Cutting Technology

Alexandra Way, Ashchurch Business Centre, Tewkesbury Gloucestershire, GL20 8NB, England - UK.

Tel: +44 (0) 1684 290 243

Email: sales@gillardcutting.com

www.gillardcutting.com