



Servo-Torq® Rim block cutter

With integral roller in-feed & exit conveyor belt

The Servo-Torq® Rim block cutters are ideal for use in-line after the plodder extruder. They can handle single, twin or even four lane production. Cut rates of up to 600 pieces per minute per lane are possible.

The main benefits to the user are:

- Machines available either in single or twin configuration.
- Single machine can handle one or two lanes; twin machine up to four lanes.
- Lenze AC servo control of blade for high accuracy at up to 600 cuts/minute.
- Cutter blade driven at high speed for a clean, square, cut end.
- Built-in blade lubrication system with stainless steel cutter block & lid.
- Stainless steel fabricated base for hygienic, rust-free, easy-clean, finish.
- Roller in-feeder gives maximum support to the product as it enters the cutter.
- Exit conveyor belt to move cut pieces away into an in-line flow-wrapper system.
- Easy-to-use Lenze 178 mm (7") colour touch-screen control panel.
- Can be configured to cut soap bars & toilet gel extrusions.



Servo-Torq® Rim block rotary cutter with roller in-feed & exit belt

The Servo-Torq® RBC uses a rotary 'flying knife' method to cut through the extrudate. A curved knife blade is typically used to provide an optimum cut end finish. Standard stainless steel guide bushes are provided.

All machines are engineered with stainless fabrications for a hygienic, rust-free, easy-clean, finish.

The usual configuration is to use a Servo-Torq® rotary cutter with an unpowered roller-bed in-feeder located between the plodder die nozzle & the inlet cutter guide bush.

The encoder length measuring wheel is positioned above the roller-bed with the wheel running on the product as it feeds forward. To ensure the encoder wheel is kept clean, an atomiser spray system is provided. The liquid used is normally Propylene Glycol, or similar, which washes the encoder wheel as it rotates.

The cutter area is also specially configured for cutting toilet rim block & soap. The blade lubrication system also uses an atomiser spray to blow a fine mist of liquid (Propylene Glycol or similar) onto the knife blade. A sealing system is added to the cutter lid to ensure that none of the liquid can leak into the cutter motor enclosure. A chute is provided under the cutter head to collect any debris.

The cut pieces are carried away from the cutting area by an integral conveyor belt. This is usually interfaced to an in-line flow-wrapper machine for in-line product wrapping & packaging.



Servo-Torq® RBC rim block cutters - with roller-bed infeed & exit belt:

Rotary cutter with roller-bed infeed & exit conveyor belt:	Max. cutting capacity:	Cutter motor (Nm):	Cutter torque (Nm):	Infeed roller bed size - W X L:	Exit belt size - W x L:
RBC Single machine:	80 mm OD	Single 17	71.6	100 mm x 1000 mm	100 mm x 1000 mm
RBC Twin machine:	80 mm OD x 2	Twin 17	71.6 x 2	Twin 100 mm x 1000 mm	Twin 100 mm x 1000 mm

www.gillardcutting.com

For more information on our product range.

© 2018 Peter Gillard & Co. Limited

Servo-Torq® is a registered trademark of Peter Gillard & Co. Limited



Servo-Torq® Rim block rotary cutter

Extrusion rotary cutter with roller-bed infeed & exit conveyor



Mechanical specification¹:	<ul style="list-style-type: none"> 1000 mm ± 50 mm line height. Alternatives available. Right-to-left product feed. Left-to-right available. Stainless steel cutter block with stainless steel lid. Quick release guide bush system. Allows for fast set-up of the machine with minimal operator skill. Integral undriven roller-bed infeed with drip tray. Integral exit conveyor fitted with food quality belt. Removable stainless steel under-belt drip tray. Counter-balanced encoder wheel above roller-bed. Robust fabricated stainless steel base (unpainted) with adjustable pad feet (plastic castors optional).
Cutter blade AC servo motor/drive technology¹:	<ul style="list-style-type: none"> Lenze brushless AC servo cutter motor with integral high resolution resolver encoder feedback control. Lenze 8400 TopLine AC servo digital drive control. Very high torque even at high speeds. Low inertia/fast acceleration for dynamic performance. Rugged construction with encoder decoupled from the motor shaft. IP65 protected motor casings. Temperature sensors fitted into motor windings for protection against over-heating.
Cutting speed & mode¹:	<ul style="list-style-type: none"> Adjustable blade speed up to 2,000 RPM. Automatic stepless cutting from 1 - 600 cuts/minute.
Operator control panel¹:	<ul style="list-style-type: none"> Lenze P300 178 mm (7") diagonal touch-screen. Robust IP65 protected front panel. Widescreen TFT display with 256,000 colours. Backlit LED screen - size 800 x 400 pixels. Front panel size 210 mm x 155 mm. 2GB internal flash memory. SD card slot (512 MB) for back-ups & updates. ProfiNET (Ethernet) & USB communications. AMD Cortex A8 processor rated at 800 MHz.
Software, PLC & motion control¹:	<ul style="list-style-type: none"> Windows® Embedded Compact 7 software. Lenze motion controller with on-board PLC function. Communication facilities via ProfiNET & Ethernet.
Encoder cut length measuring¹:	<ul style="list-style-type: none"> Rotary encoder measuring at 3000 pulses/revolution. Secure support bracket with counter balanced arm. Knurled aluminium measuring wheel. Product measured as it moves along inlet roller-bed. Atomiser spray system to keep wheel clean.
Safety guarding¹:	<ul style="list-style-type: none"> PILZ Class E coded magnet safety sensors fitted to cutter lid guard, inlet tunnel guard & exit tunnel guard. All IP65 protected. Internal safety relay monitoring with re-set button. Emergency stop push button. Compliance with all relevant EN & ISO Standards. Fitted with a CE plate and provided with a Certificate of Conformity or Certificate of Incorporation².
Blade lubrication system¹:	<ul style="list-style-type: none"> Stainless steel cutter head & lid. Atomiser spray system for fine mist lubrication. Drip lubrication system available as an option. Stainless steel lubrication reservoir. Lubrication level indicator. Stainless steel chute below cutter head for debris.
Tooling & blades¹:	<ul style="list-style-type: none"> One pair stainless steel cutter guide bushes. 2 off Curved blades - stainless steel - 0.6 mm thick.

1. Specifications subject to change without notice. Please consult the factory for details of any changes.
2. Which Certificate will depend upon the exact configuration of the machine and the way it is installed.

Physical specification¹:	<ul style="list-style-type: none"> Approximately 2200 mm long x 865 mm deep x 1675 mm high (based on 1000 mm line height). Approximately 450 Kgs without options fitted.
Power & air¹:	<ul style="list-style-type: none"> 400V three phase 50 Hz supply with neutral and earth. 30 Amp supply. Alternatives available. Factory compressed air supply for atomiser spray.
Support:	<ul style="list-style-type: none"> One year parts warranty with express delivery during warranty period. Consumables excluded.

Touch-screen control interface:



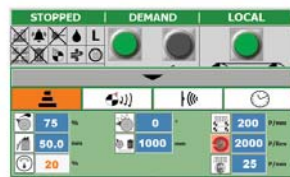
The Start-up Screen:

- The touch-screen panel controls all normal machine operations



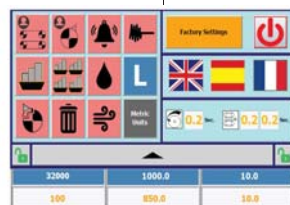
The Control Screen:

- Enter the cut length, linespeed & batch quantity. Lengths from 10.0 to 999,999.9 mm can be entered.



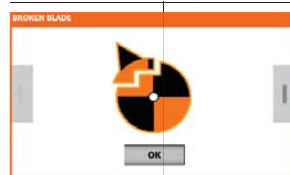
The Setup Screen:

- Blade speed adjustment from 50% to 100% of full speed.
- Stepless cutting from 1 - 2,000 cuts.
- Caterpillar local/remote speed selection.



The Tools Screen :

- Set the control panel language
- Adjust machine parameters.
- Enter the password protected area.



The Options Screens:

- Individual options can have their own screen, such as the broken blade option. A warning screen appears when a broken blade is detected.



The Safety Screen:

- Easy to follow screens to ensure the machine remains safe to operate.

Many options are available.
Please contact us for more details.

Gillard Cutting Technology

Alexandra Way, Ashchurch Business Centre, Tewkesbury
Gloucestershire, GL20 8NB, England - UK.

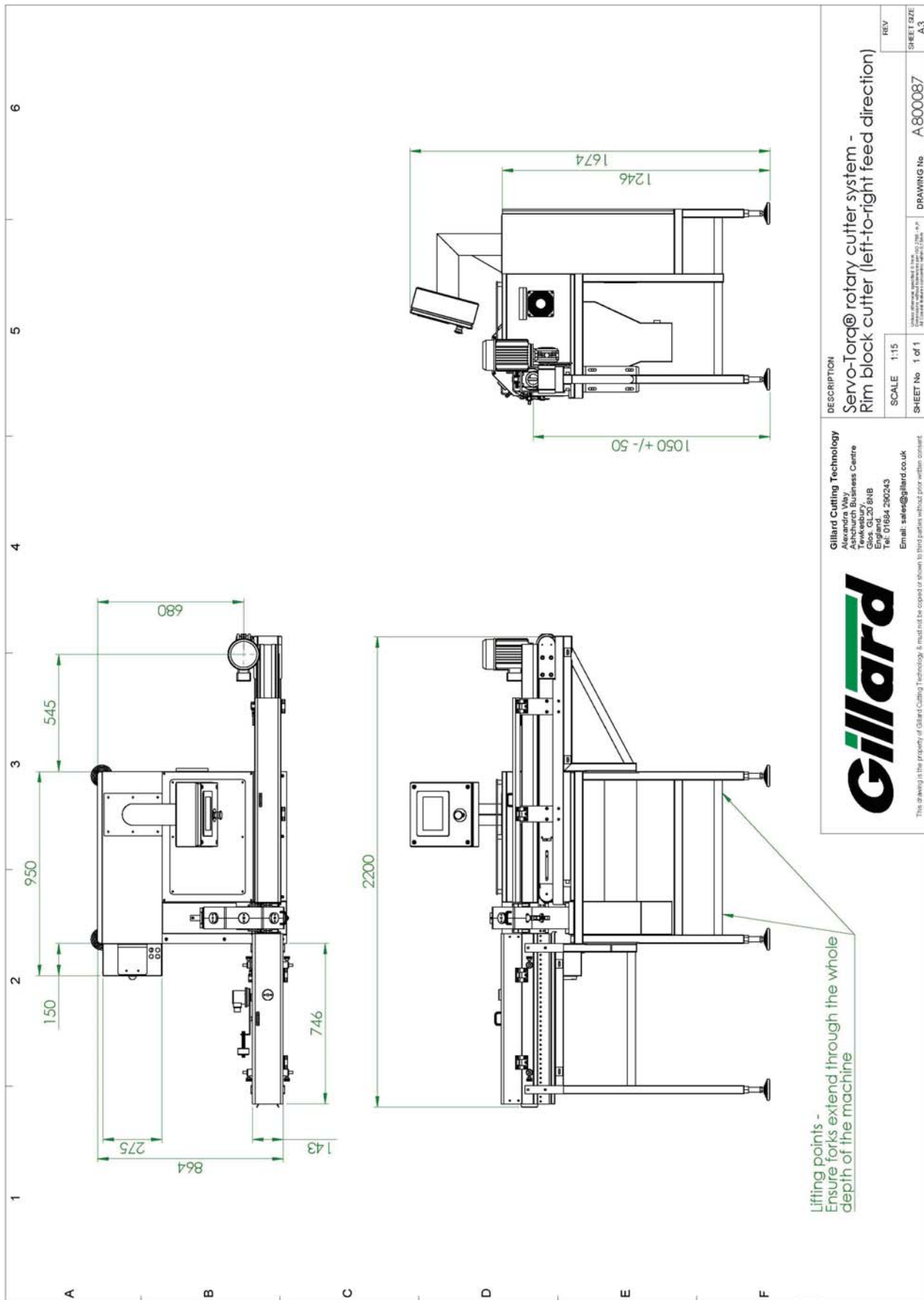
Tel: +44 (0) 1684 290 243

Email: sales@gillardcutting.com

www.gillardcutting.com

Servo-Torq® Single rim block rotary cutter

Extrusion rotary cutter with roller-bed infeed & exit conveyor



Lifting points -
Ensure forks extend through the whole
depth of the machine

Gillard Cutting Technology
 Alexandra Way, Ashchurch Business Centre
 Tewkesbury,
 Gloucestershire, GL20 8NB
 England - UK
 Tel: 01684 290243
 Email: sales@gillard.co.uk

Gillard

This drawing is the property of Gillard Cutting Technology & must not be copied or shown to third parties without prior written consent.

DESCRIPTION	Rev	SHEET SIZE
Servo-Torq® rotary cutter system - Rim block cutter (left-to-right feed direction)	A3	A3
SCALE 1:15	DRAWING No	A 800087
SHEET No 1 of 1		

All dimensions in millimetres.
 This drawing is provided for guide purposes only. Specifications & dimensions are subject to change without notice. These will change depending on your application & requirements. Please contact us for more details.

© 2018 Peter Gillard & Co. Limited
 Servo-Torq® is a registered trademark of Peter Gillard & Co. Limited

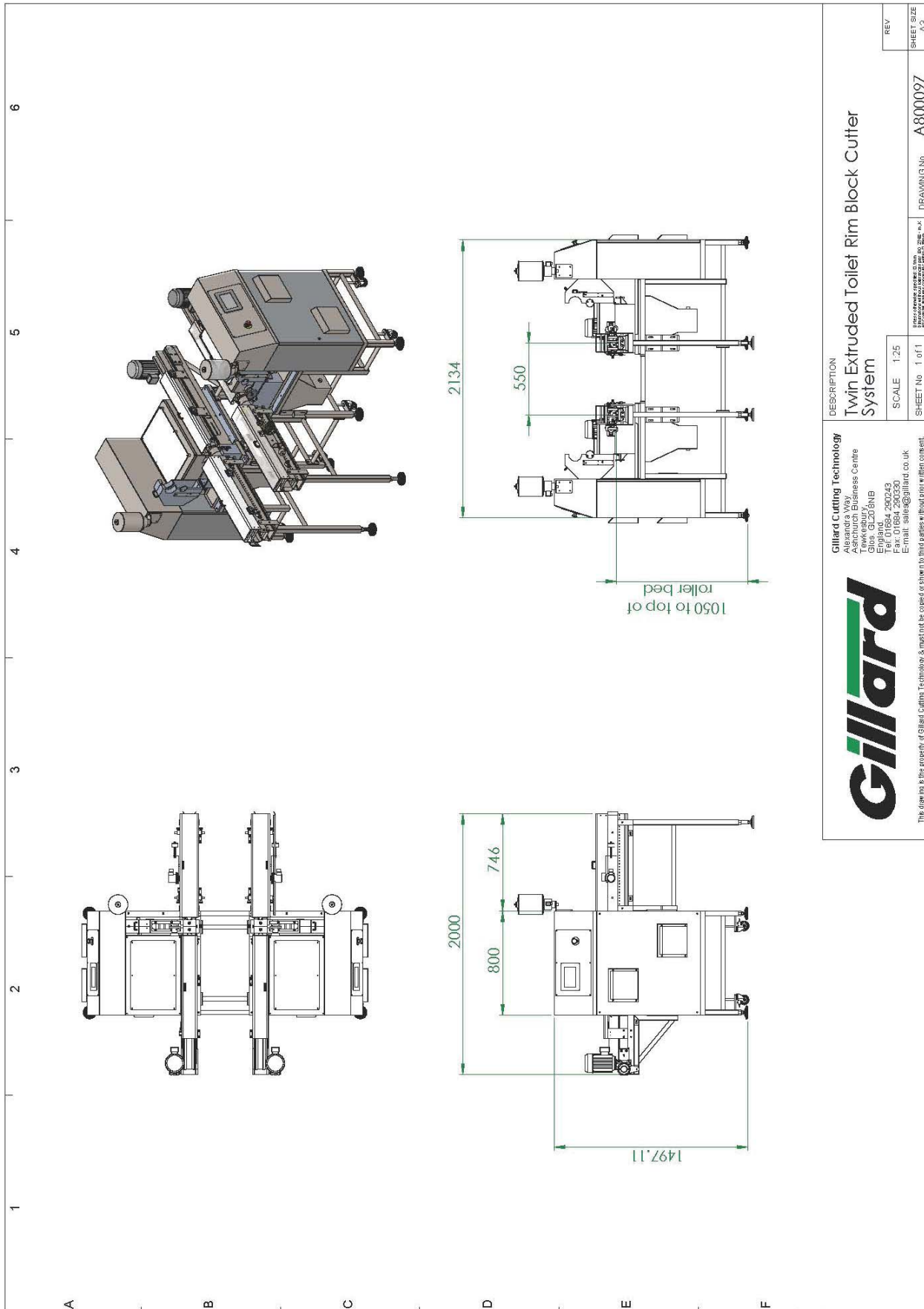
Gillard Cutting Technology
 Alexandra Way, Ashchurch Business Centre, Tewkesbury
 Gloucestershire, GL20 8NB, England - UK.
 Tel: +44 (0) 1684 290 243
 Email: sales@gillardcutting.com

www.gillardcutting.com



Servo-Torq[®] Twin rim block rotary cutter

Extrusion rotary cutter with roller-bed infeed & exit conveyor



All dimensions in millimetres.

This drawing is provided for guide purposes only. Specifications & dimensions are subject to change without notice. These will change depending on your application & requirements. Please contact us for more details.

© 2018 Peter Gillard & Co. Limited
 Servo-Torq[®] is a registered trademark of Peter Gillard & Co. Limited

Gillard Cutting Technology Alexandra Way, Ashchurch Business Centre Tewkesbury Glouce, GL20 8NB England Tel: +44 (0) 1684 290243 Fax: 01684 290330 E-mail: sales@gillard.co.uk	DESCRIPTION Twin Extruded Toilet Rim Block Cutter System	REV AS
	SCALE 1:25 SHEET No 1 of 1	DRAWING No A800097



This drawing is the property of Gillard Cutting Technology & must not be copied or shown to third parties without prior written consent.

Gillard Cutting Technology

Alexandra Way, Ashchurch Business Centre, Tewkesbury Gloucestershire, GL20 8NB, England - UK.

Tel: +44 (0) 1684 290 243

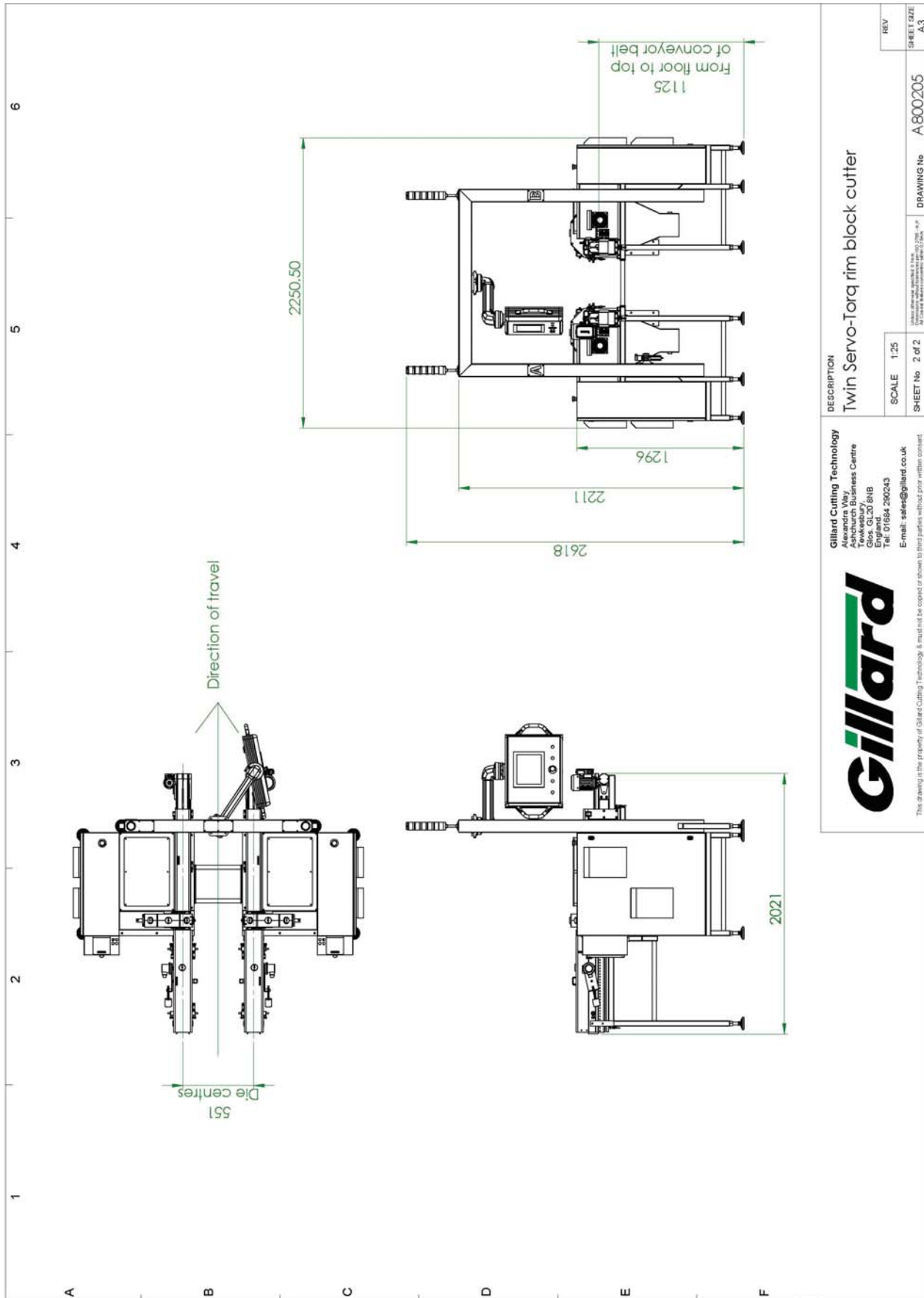
Email: sales@gillardcutting.com

www.gillardcutting.com



Servo-Torq® Twin rim block rotary cutter

Extrusion rotary cutter with roller-bed infeed & exit conveyor



Gillard Cutting Technology Ashchurch Business Centre Tewkesbury, Gloucestershire, GL20 8NB England Tel: 01684 290243 Email: sales@gillard.co.uk		DESCRIPTION Twin Servo-Torq rim block cutter	SCALE 1:25 SHEET No 2 of 2	DRAWING No A.800205	REV SHEET SIZE A3
--	--	---	-------------------------------	---------------------	-------------------------

This drawing is the property of Gillard Cutting Technology. It must not be copied or shown to third parties without prior written consent.

All dimensions in millimetres.
 This drawing is provided for guide purposes only. Specifications & dimensions are subject to change without notice. These will change depending on your application & requirements. Please contact us for more details.

© 2018 Peter Gillard & Co. Limited
 Servo-Torq® is a registered trademark of Peter Gillard & Co. Limited

Gillard Cutting Technology
 Alexandra Way, Ashchurch Business Centre, Tewkesbury
 Gloucestershire, GL20 8NB, England - UK.
 Tel: +44 (0) 1684 290 243
 Email: sales@gillardcutting.com

www.gillardcutting.com

