



## Servo-Torq® Mini Slider Plus rotary cutter machine

Compact in-line rotary cutter & caterpillar infeeder/puller

The Servo-Torq® Mini Slider Plus combines advanced servo rotary cutting and feeding with a very compact design. It is ideal for users looking for a compact in-line, high accuracy extrusion cutting system.

The main benefits to the user are:

- Lenze i700 AC servo control for better cut length accuracy & speed.
- Slide-away cutter head makes in-line start-up much easier.
- A faster blade speed for an improved cut quality.
- Full colour Siemens 178 mm (7") touch-screen panel.
- High cut rates possible; up to 2,000 pieces per minute.
- Twin direct-drive AC servo motors powering the caterpillar belts.
- Planetary gearboxes; sealed-for-life & zero back-lash for a smooth feed.
- Very compact design; ideal for medical clean-room use.
- Built-in blade lubrication system with medical options available.

### Mode of Operation

#### Servo-Torq® Mini Slider Plus rotary cutter and caterpillar infeeder

The Servo-Torq® Mini uses a rotary 'flying knife' method to cut through the extrudate. The ultra-thin knife blade is rotated at high speed through 360°. During part of this rotation the blade slices through the extrudate. Inlet & outlet bushes guide the blade & the extrudate during the cutting operation.

The signal to activate the cut comes from the integral length counter. This is linked to the encoder which measures the amount of extrudate that passes through the caterpillar infeeder.

The integral Accra-Feed™ UA50 twin belt caterpillar infeeder is driven by two direct-drive AC servo motors. The motor power is transmitted to the poly-vee belts via twin zero-backlash planetary gearboxes.

Both belts move simultaneously around the centre-line of the product. A single hand-wheel controls this movement.

Inlet guide rollers are provided to direct the extrudate onto the belts at the correct point. The belts themselves can be coated in either heavy-duty neoprene or cellular polyurethane.

Servo-Torq® Mini Slider Plus rotary cutter system:				
	Capacity (mm):	Motor sizes (Nm):	Drive rating (Amp):	Maximum speeds:
Servo-Torq® Slider Plus Model ST-M/30A-SB:	30 max. Ø	4.5	5.0	450 - 2000 cuts/minute*
Accra-Feed™ Caterpillar infeeder Model UA50:	50 wide x 250 long belts	1.5 x 2	5.0	100 m/min** linespeed

\* Figures quoted refer to maximum in on-demand & SpeedCut™ cutting modes with one blade fitted.

\*\* Maximum selectable linespeed. Other maximum linespeeds are 10, 15, 20, 30, 50 & 70 m/min.

[www.gillardcutting.com](http://www.gillardcutting.com)

for more information on our product range.



#### Gillard Cutting Technology

Alexandra Way, Ashchurch Business Centre  
Tewkesbury, Gloucestershire, GL20 8NB  
England - UK.

Tel: +44 (0) 1684 290 243

Email: [sales@gillardcutting.com](mailto:sales@gillardcutting.com)

© 2018 Peter Gillard & Co. Limited

Servo-Torq® is a registered trademark of Peter Gillard & Co. Limited  
Accra-Feed™ is a trademark of Peter Gillard & Co. Limited



# Servo-Torq® Mini Slider Plus rotary cutter

## Compact rotary cutter & caterpillar infeeder



Mechanical specification <sup>1</sup> :	<ul style="list-style-type: none"> <li>Floor-standing base fitted with castors &amp; floor locks.</li> <li>Right-to-left product feed. Left-to-right <u>not</u> available.</li> <li>Cast aluminium cutter block with stainless steel clam-shell cutter lid.</li> <li>Robust knife shaft assembly with aluminium blade holder fitted with hardened steel pins.</li> <li>Slide-away cutter head designed for in-line cutting.</li> <li>Poly-vee caterpillar belts covered in heavy-duty foamed polyurethane.</li> <li>Single handwheel adjustment of both belts around the centre-line.</li> <li>Robust fabricated steel base fitted with four plastic swivel castors. For pad feet floor locks; one on each corner.</li> <li>Painted RAL 7035 light grey semi-gloss (other colours available).</li> </ul>
Blade & belt infeeder AC servo technology <sup>1</sup> :	<ul style="list-style-type: none"> <li>Lenze i700 multi-axis AC servo control system.</li> <li>Lenze brushless AC servo motors with integral high resolution encoder feedback control.</li> <li>Very high torque even at high speeds.</li> <li>Low inertia/fast acceleration for dynamic performance.</li> <li>Rugged construction with encoders decoupled from the motor shaft. IP65 protected motor casing.</li> <li>Temperature sensors fitted into motor windings for protection against over-heating.</li> <li>Quick release connectors on motors.</li> <li>Caterpillar belts driven by twin direct drive motors with zero-backlash planetary gearboxes.</li> </ul>
Cutting speed & modes <sup>1</sup> :	<ul style="list-style-type: none"> <li>Selectable cutting modes from 1 - 2000 cuts/min.</li> <li>Blade rotation speed adjustable up to 2,000 RPM.</li> </ul>
Operator control panel <sup>1</sup> :	<ul style="list-style-type: none"> <li>Siemens TP700 Comfort colour touch-screen panel.</li> <li>Screen size 7" (177.8 mm) - IP65 protected panel.</li> <li>Widescreen TFT display. 16 million colours. LED backlighting. 800 x 480 pixel resolution.</li> <li>12 MB user memory.</li> <li>Front panel size: 214 mm x 158 mm.</li> <li>Emergency stop push button.</li> <li>Safety circuit re-set button (via touch-screen).</li> </ul>
Software, PLC & motion control <sup>1</sup> :	<ul style="list-style-type: none"> <li>Microsoft Windows® Embedded Compact 7 touch-screen operating software.</li> <li>Lenze servo motion control software.</li> <li>Embedded PLC functions in Lenze servo drives.</li> <li>Integrated multi-axis servo motion controller.</li> </ul>
Communications <sup>1</sup> :	<ul style="list-style-type: none"> <li>EtherNet (ProfiNet) &amp; USB connections available.</li> <li>MultiMedia &amp; SD card slot for program back-ups.</li> </ul>
Safety <sup>1</sup> :	<ul style="list-style-type: none"> <li>PILZ coded magnet interlocks on cutter lid, exit cutter bush, slide-away cutter head &amp; caterpillar access door/.</li> <li>Inlet guard with 2 vertical &amp; 1 horizontal rollers.</li> <li>Internal safety relay with re-set push button.</li> <li>Two emergency stop push buttons.</li> <li>Guards painted RAL 2004 bright orange.</li> <li>In compliance with EN ISO Standards.</li> <li>CE Certificate of Conformity or Incorporation<sup>2</sup>.</li> </ul>
Tooling & blades:	<ul style="list-style-type: none"> <li>Pair stainless steel cutter guide bushes - pilot bore.</li> <li>Light-weight aluminium RAZOR blade holder.</li> <li>50 off 0.25 mm thick stainless steel RAZOR blades.</li> </ul>
Blade lubrication system:	<ul style="list-style-type: none"> <li>Cast aluminium lubrication reservoir.</li> <li>Lubrication level indicator to front &amp; drain tap to rear.</li> <li>Lubrication improves cut quality &amp; extends blade life.</li> </ul>

Physical specification <sup>1</sup> :	<ul style="list-style-type: none"> <li>Approx. 825 mm long x 600 mm wide x 1400mm high.</li> <li>Approx. 170 Kgs net weight without options fitted.</li> </ul>
Power:	<ul style="list-style-type: none"> <li>400V 3 phase 50/60 Hz supply, with neutral &amp; earth.</li> <li>Alternative supplies available.</li> </ul>
Support:	<ul style="list-style-type: none"> <li>One years parts warranty with express delivery during warranty period. Consumables excluded.</li> </ul>

### Colour touch-screen interface:

#### The Start Screen:



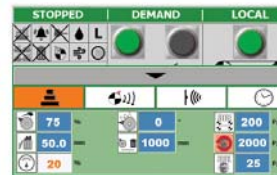
- The touch-screen panel controls all normal machine operations.

#### The Control Screen:



- Enter the cut length, linespeed & batch quantity. Lengths from 10.0 to 999,999.9 mm can be entered.

#### The Setup Screen:



- Blade speed adjustment from 50% to 100% of full speed.
- Cutting mode selection.

#### The Tools Screen:



- To set the control panel language.
- To adjust other machine parameters.
- To enter the password protected zone.

#### The Safety Screens:



- To re-set the machine safety guards.



Gillard Cutting Technology  
 Alexandra Way, Ashchurch Business Centre, Tewkesbury  
 GL20 8NB, Gloucestershire, England - UK.  
 Tel: +44 (0) 1684 290 243  
 Email: sales@gillardcutting.com  
 www.gillardcutting.com

1. Specifications are subject to change without notice. Please ask for details of any changes.  
 2. CE Certificate will depend upon the exact configuration of the machine and the way it is installed.

