



Servo-Torq® Cuff tube cutters

With integral camera, laser or optical sensors

The Servo-Torq® LT & MT Combi rotary cutters can be fitted with cuff tube sensors to ensure accurate cutting on the cuff (flat) part of corrugated tubes & pipes.

A range of detection systems are available. These include digital camera, laser & optical sensors. Accurate cutting is combined with higher extrusion linespeeds.

The main benefits to the user are:

- Well proven & tested cuff detection systems that can be tailored to your needs.
- Cutter blade direct-motor driven at high speed for a clean, square, cut end.
- Easy-to-use Siemens 228 mm (9") wide-screen colour touch-screen control panel.
- Lenze i700 multi-axis AC servo control for optimum speed & accuracy.
- Blade lubrication system as standard with a robust aluminium cutter block.
- Twin direct drive servo motors powering the puller belts via planetary gearboxes.
- Slide-away cutter head for easy extrusion line start-up & blade change.



Servo-Torq® Cuff tube cutter with Accra-Feed™ caterpillar infeeder

Designed for cuffed tube applications such as complex automotive fuel & washer pipes, medical respirator tubing and concertina plumbing pipe.

Three types of technology are available to detect the cuff: digital camera, optical sensor & laser.

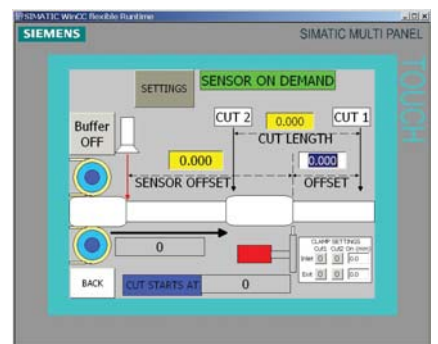
All of them constantly monitor the tube as it passes by at normal extrusion speed. The specially developed software handles the data to ensure accurate cutting on the middle of the cuff. A number of different cut lengths can be handled per corrugation chain, along with several scrap lengths.

In most cases there is no need to stop the tube to cut, allowing higher linespeeds to be achieved. However, when we do need to stop, our clamp system provides a quick & flexible method of holding the tube still while the cut takes place.

All our Servo-Torq® cuff cutters are built to the highest specification. Lenze i700 multi-axis digital servo control is standard as is remote support via the internet. The caterpillar infeeders are UA (Ultra-Accurate™) type, with twin direct drive servo motors for improved infeed accuracy.



Servo-Torq® Cuff tube cutters - with caterpillar infeeder:						
Rotary cutter & caterpillar infeeder Model number:	Max. OD cutting capacity (mm):	Cutter motor (Nm):	Cutter torque (Nm):	Infeed motors (Nm):	Infeed gearbox type:	Infeeder belt size W x L (mm):
ST-LT/40B-UA75	40	7.5	24.7	2 x 2.3	Planetary	75 x 550
ST-MT/50C-UA95XL	50	11.0	41.5	2 x 2.3	Planetary	95 x 1000



www.gillardcutting.com

For more information on our product range.

Servo-Torq® Cuff tube Combi rotary cutters

Extrusion rotary cutter - Accra-Feed™ Combi



Mechanical specification¹:	<ul style="list-style-type: none"> 1000 mm ± 50 mm line height. Alternatives available. Right-to-left product feed. Left-to-right available. Aluminium cutter block with stainless drip tray. Light-weight aluminium blade holder fitted directly onto cutter servo motor; no belts to wear or fray. Slide-away cutter head for easy line start-up. Poly-vee caterpillar belts covered in heavy-duty cellular Polyethylene or sponge Neoprene. Adjustment of both belts around the centre-line. Robust fabricated steel base fitted with 75 mm diameter white plastic swivel castors.
Blade & caterpillar infeed AC servo motor/drive technology¹:	<ul style="list-style-type: none"> Lenze brushless AC servo motors with integral high resolution encoder feedback control. Lenze i700 multi-axis servo drive control. Very high torque even at high speeds. Low inertia/fast acceleration for dynamic performance. Rugged construction with encoders decoupled from the motor shaft. IP65 protected motor casings. Temperature sensors fitted into motor windings for protection against over-heating.
Cutting speed & modes¹:	<ul style="list-style-type: none"> Adjustable blade speed up to 2,500 RPM. Automatic stepless cutting from 1 - 2,500 cuts/minute.
Operator control panel¹:	<ul style="list-style-type: none"> Siemens TP700 Comfort 228 mm (9") touch-screen. Robust IP65 protected front panel. Widescreen TFT with 16 million colours. Backlit LED screen - size 800 x 400 pixels. Front panel size 214 mm x 158 mm. 12 MB user memory SD card slot for program back-ups & updates. ProfiNET (Ethernet) & USB communications. Safety guards okay lamps with re-set soft button.
Software, PLC & motion control¹:	<ul style="list-style-type: none"> Siemens WinCC Comfort operating software. Siemens S-7 PLC with digital & analog modules. Lenze motion controller with EtherCAT comms.
Safety guarding¹:	<ul style="list-style-type: none"> PILZ Class 3 coded magnet safety sensors fitted to cutter lid, outlet cutter guide bush, slide-away cutter heads & caterpillar access door. All IP65 protected. Pre-belt inlet safety tunnel guard (RAL 2004 orange). Internal safety relay with re-set push button. Two emergency stop push buttons. Compliance with EN & ISO Standards. Fitted with a CE plate and provided with a Certificate of Conformity or Certificate of Incorporation².
Blade lubrication system:	<ul style="list-style-type: none"> Aluminium bath lubrication reservoir. Lubrication level indicator & drain tap provided. Stainless steel tray below reservoir to catch drips.
Tooling & blades:	<ul style="list-style-type: none"> One pair stainless steel cutter guide bushes. 2 off curved blades - spring steel - 0.6 mm thick.
Plus machine specification¹	<ul style="list-style-type: none"> Remote machine support via the internet. eWON industrial VPN router with Ethernet switch. Secure connectivity for remote back-up & support. Communication facilities via ProfiNET & Ethernet. Digital counter showing distance between the belts. Stainless steel drip tray under the belts. Traffic light beacon to indicate machine status.
Value pack with extra features over Standard specification:	

1. Specifications subject to change without notice. Please consult the factory for details of any changes.
2. Which Certificate will depend upon the exact configuration of the machine and the way it is installed.

Physical specification¹:	<ul style="list-style-type: none"> Approximately 1000 mm long x 1000 mm deep x 1750 mm high (based on 1000 mm line height). Approximately 450 Kgs without options fitted.
Power:	<ul style="list-style-type: none"> 400V three phase 50 Hz supply with neutral and earth. 30 Amp supply. Alternatives available.
Support:	<ul style="list-style-type: none"> One year parts warranty with express delivery during warranty period. Consumables excluded.

Touch-screen control interface:



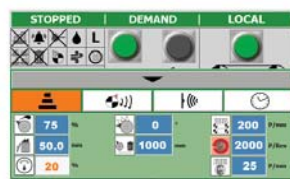
The Start-up Screen:

- The touch-screen panel controls all normal machine operations



The Control Screen:

- Enter the cut length, linespeed & batch quantity. Lengths from 10.0 to 999,999.9 mm can be entered.



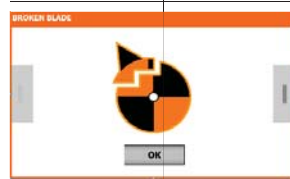
The Setup Screen:

- Blade speed adjustment from 50% to 100% of full speed.
- Stepless cutting from 1 - 2,500 cuts.
- Caterpillar local/remote speed selection.



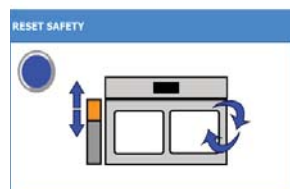
The Tools Screen :

- Set the control panel language
- Adjust machine parameters.
- Enter the password protected area.



The Options Screens:

- Individual options can have their own screen, such as the broken blade option. A warning screen appears when a broken blade is detected.



The Safety Screens:

- Easy-to-follow screens inform the operator on the machine status, with visual instructions on what to do.

Many options are available. Please contact us for more details.

Gillard Cutting Technology

Alexandra Way, Ashchurch Business Centre, Tewkesbury Gloucestershire, GL20 8NB, England - UK.

Tel: +44 (0) 1684 290 243

Email: sales@gillardcutting.com

www.gillardcutting.com