



Braid-Cut™ MT circular blade cutters for stainless steel wire braided PTFE & rubber

With integral Accra-Feed™ UA belt infeder

Suitable for both PTFE & rubber tube/hose with stainless steel wire braid covering.

Designed to cut through braided stainless wire. An integral welding head fuses the wires to leave a neat cut end.

The main benefits to the user are:

- No wire flare; the welded cut end can slip straight into the ferrule.
- Easy-to-use Siemens 178 mm (7") colour touch-screen control panel.
- Lenze i700 multi-axis AC servo control for optimum speed & accuracy.
- Twin direct drive servo motors powering the infeder belts via planetary gearboxes.
- Full PLC control makes the machine & welder easy-to-use.



Braid-Cut™ MT Circular blade cutter for braided PTFE & rubber tubing

This advanced machine cuts through stainless braided hose cleanly, using an integral welding head to fuse the wire ends together.

The PTFE or rubber inner hose is left with a perfect cut finish. There is no wire flare or loose ends to worry about. The Braid-Cut™ is fully PLC controlled, with an advanced program to ensure total synchronisation between the welding & cutting.

A range of pay-off systems are available to ensure efficient off-line cutting from coils.

We can also integrate ink-jet printers for marking the cut pieces.



Braid-Cut™ MT Circular blade cutter with Accra-Feed caterpillar infeder:

Cutter & caterpillar infeder Model number:	Maximum outer diameter cutting capacity (mm):	Infeder motors (Nm):	Gearbox type:	Infeder belt size - width x length (mm):
WBCM-MT25-UA50	25	2 x 1.5	Planetary	50 x 250
WBCM-MT30-UA50	30	2 x 1.5	Planetary	50 x 250



www.gillardcutting.com

For more information on our product range.

© 2017 Peter Gillard & Co. Limited

Braid-Cut™ is a trademark of Peter Gillard & Co. Limited

Accra-Feed™ is a trademark of Peter Gillard & Co. Limited

Braid-Cut™ MT Circular blade cutters

For PTFE & rubber hose with braided stainless steel wire covering



Mechanical specification¹:	<ul style="list-style-type: none"> 1000 mm ± 50 mm line height. Alternatives available. Right-to-left product feed. Poly-vee caterpillar belts covered in heavy-duty cellular Polyethylene. Robust fabricated steel base.
Blade & caterpillar infeed AC servo motor/drive technology¹:	<ul style="list-style-type: none"> Lenze brushless AC servo motors with integral high resolution resolver encoder feedback control. Lenze i700 multi-axis servo drive control. Very high torque even at high speeds. Low inertia/fast acceleration for dynamic performance. Rugged construction with encoders decoupled from the motor shaft. IP65 protected motor casings. Temperature sensors fitted into motor windings for protection against over-heating.
Cutting speed & weld modes¹:	<ul style="list-style-type: none"> Adjustable blade speed. Adjustable weld setting with memory function.
Operator control panel¹:	<ul style="list-style-type: none"> Siemens TP700 Comfort 178 mm (7") touch-screen. Robust IP65 protected front panel. Widescreen TFT with 16 million colours. Backlit LED screen - size 800 x 400 pixels. Front panel size 214 mm x 158 mm. 12 MB user memory SD card slot for program back-ups & updates. ProfiNET (Ethernet) & USB communications. Safety guards okay lamps with re-set soft button.
Software, PLC & motion control¹:	<ul style="list-style-type: none"> Siemens WinCC Comfort operating software. Siemens S-7 PLC with digital & analog modules. Lenze motion controller with EtherCAT comms.
Safety guarding¹:	<ul style="list-style-type: none"> PILZ Class E coded magnet safety sensors. All IP65 protected. Pre-belt inlet safety tunnel guard (RAL 2004 orange). Internal safety monitoring relay with re-set. Two emergency stop push buttons. Compliance with EN & ISO Standards. Fitted with a CE plate and provided with a Certificate of Conformity or Certificate of Incorporation².
Tooling & blades:	<ul style="list-style-type: none"> Circular knife blade 2.5 mm thick. 1 off set Elkonite® Tungsten Copper alloy electrodes.
Other features¹:	<ul style="list-style-type: none"> Remote machine support via the internet. eWON industrial VPN router with Ethernet switch. Secure connectivity for remote back-up & support. Communication facilities via ProfiNET & Ethernet. Digital counter showing distance between the belts. Stainless steel drip tray under the belts.

1. Specifications subject to change without notice. Please consult the factory for details of any changes.
2. Which Certificate will depend upon the exact configuration of the machine and the way it is installed.

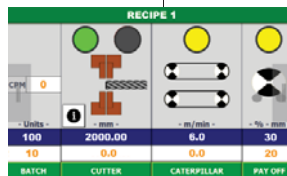


Physical specification¹:	<ul style="list-style-type: none"> Approximately 1000 mm long x 1000 mm deep x 1750 mm high (based on 1000 mm line height). Approximately 550 Kgs without options fitted.
Power:	<ul style="list-style-type: none"> 400V three phase 50 Hz supply with neutral and earth. 63 Amp supply. Alternatives available.
Air:	<ul style="list-style-type: none"> 6 Bar factory supply recommended. The machine is fitted with a suitable flow valve/regulator & air filter.
Support:	<ul style="list-style-type: none"> One year parts warranty with express delivery during warranty period. Consumables excluded.
Touch-screen control interface:	



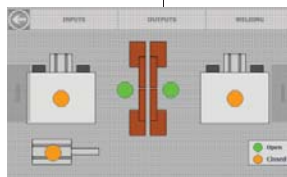
The Start-up Screen:

- The touch-screen panel controls all normal machine operations



The Control Screen:

- Enter the cut length, belt speed & batch quantity. Lengths from 76.2 mm to 5000 mm can be entered. Cut lengths down to 60 mm are available as a special order.



The Setup Screen:

- Adjustment & status of the electrode jaws & clamps.
- Control of inputs & outputs for clamps & welding.



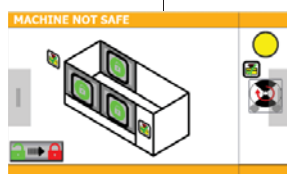
The Weld Control Screen :

- Set welder head power & time.
- Pre-set weld programs available.
- Password protected area.



The Tools Screen :

- Set the control panel language
- Adjust machine parameters.
- Enter the password protected area.



The Safety Screens:

- Easy-to-follow screens to inform the operator of the machine status. With visual instructions on what to do.

Gillard Cutting Technology

Alexandra Way, Ashchurch Business Centre, Tewkesbury Gloucestershire, GL20 8NB, England - UK.

Tel: +44 (0) 1684 290 243

Email: sales@gillardcutting.com

www.gillardcutting.com

